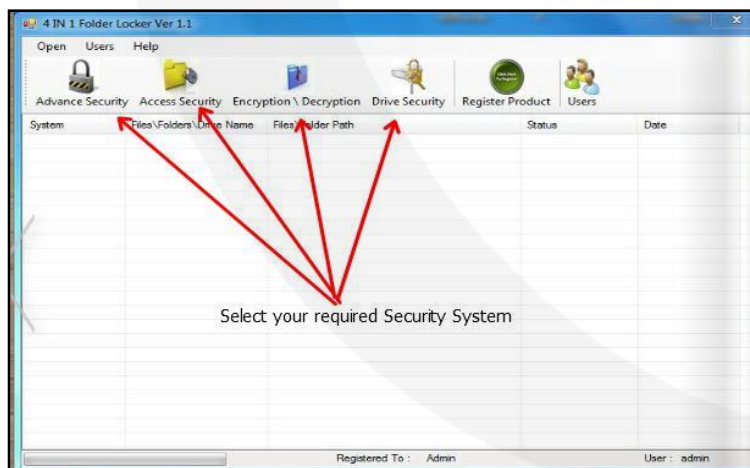
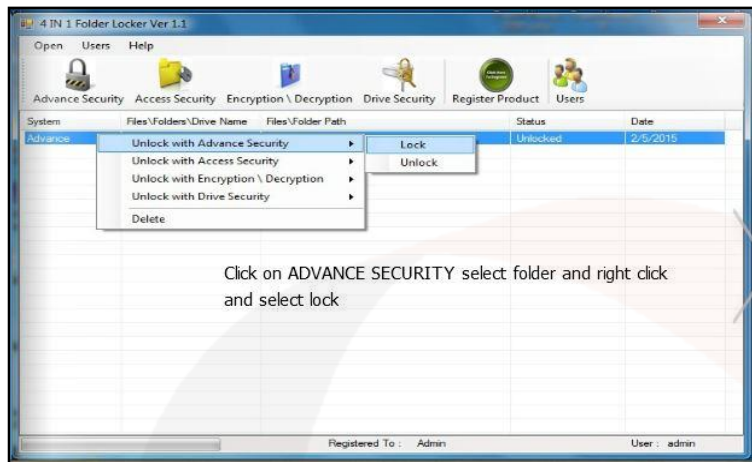




1. The default user and password is Admin. You can select "Default login" to login with default user and password. Also you can create your username and password but after you purchase it.



2. After login you will find all Security systems. If you are using trial version then you can only able to use Access security system and Registration for registration.



3. After you insert file, you have to right click and select the locking system from 4 security systems.



4. Encryption and Decryption is very secure way to secure your files of all types. Always remember your password which you will enter while locking the files. If you forgot the password then contact the technical team.

5. Next option is to lock the whole drive or any removable drive the same way you lock other files or folders.

6. If you face any problem or forgot your password or if any problem came with your file, you can contact our technical team by following steps.

- . Goto Help
- . Select Technical Support
- . Fill the form and note down your complain ticket number.

Our technical team will contact you and solve your problem.

## CONTACT US

Email

Support: [support@bctech.is-great.net](mailto:support@bctech.is-great.net)

Sales: [sales@bctech.is-great.net](mailto:sales@bctech.is-great.net)

WhatsApp

00971-50-9237924