

L1 MANAGER 2011-2012

1 OVERVIEW

Files compatibility			
	EXCEL 2003	EXCEL 2007	EXCEL 2011
L1_manager_V1.0.a_eng_25			
L1_pronostic_V1.0.a_eng			
L1_pronostic_V1.0.a_eng_excel2003			

L1 manager allows you to organize a forecast competition for premier league.

The competition is organized using two files: "pronostic" file allowing every participant to make his forecast, and "manager" file grouping all participants' forecasts.

2 CONFIGURE COMPETITION

Customize the scale of points :

Scale of points																														
Matches										Points		Matches simulator																		
A	• Winner found or draw :											Bet		Result		A	B1	B2	C	D	Points									
B1,2	• Correct score per team :											1	0	0	0			0				►	0							
C	• Correct score per match :											1	0	3	1	0						►	0							
D	• Gap of goals :									=	0	1	2	3	4	5+	1	0	2	1	0		►	0						
										Pts							1	0	2	0	0		0		►	0				
Matchday										Points		3	0	4	1	0				0		►	0							
• NB of home wins :												1	1	1	1	0	0	0	0	0	0		►	0						
• NB of draws :												3	0	3	0	0	0	0	0	0	0		►	0						
• NB of away wins :												6	0	6	1	0	0			0		►	0							
• NB of home wins + draws + away wins :												6	0	6	0	0	0	0	0	0	0		►	0						
Ranking																														
• Ranking Matchday 1-37 :										=	1	2	3	4	5	6	7	8	9	10	11	12	13	14	15	16	17	18	19	20
										Pts																				
• Final ranking :										=	1	2	3	4	5	6	7	8	9	10	11	12	13	14	15	16	17	18	19	20
										Pts																				

Figure 1

Only the blue numbers can be changed, the match simulator allows to evaluate points according to various scenarios of bets / scores.

Configure earning distributions between participants :

Bet

☒ £ ☐ Pts 10,00

Earning distribution


1st	50	▲▼
2nd	25	▲▼
3rd	11	▲▼
4th	8	▲▼
5th	6	▲▼
Total:	100%	

Figure 2

3 FORECASTS

Send « pronostic » file to all participants, make sure to rename each file before sending to prevent file overwrite when you receive them.

Each participant must enter his name and first name :

name first name 

MATCHDAY 1

N°:	Matches	Teams	J	JG	JP	JN	GP	GC	GA	Pts	t	v	Teams	J	JG	JP	JN	GP	GC	GA	Pts	t	v
1	Blackburn	Wolverhampton	1	0	0	0	0	0	0	0	0		1	Manchester Utd	0	0	0	0	0	0	0	0	

Figure 3



Files “pronostic” misinformed (name and / or first name missing, same name / first name in multiple files, ...) will not be imported into the “manager” file.

You can use « manager » file to make forecast.

Then consolidate all “pronostic” files in the same directory, regardless of the location on your computer.

4 FORECAST IMPORTATION

To import « pronostic » files click on « forecast import » in the “options” tab, then open the folder containing the “pronostic” files with the dialog box "Browse for folder".

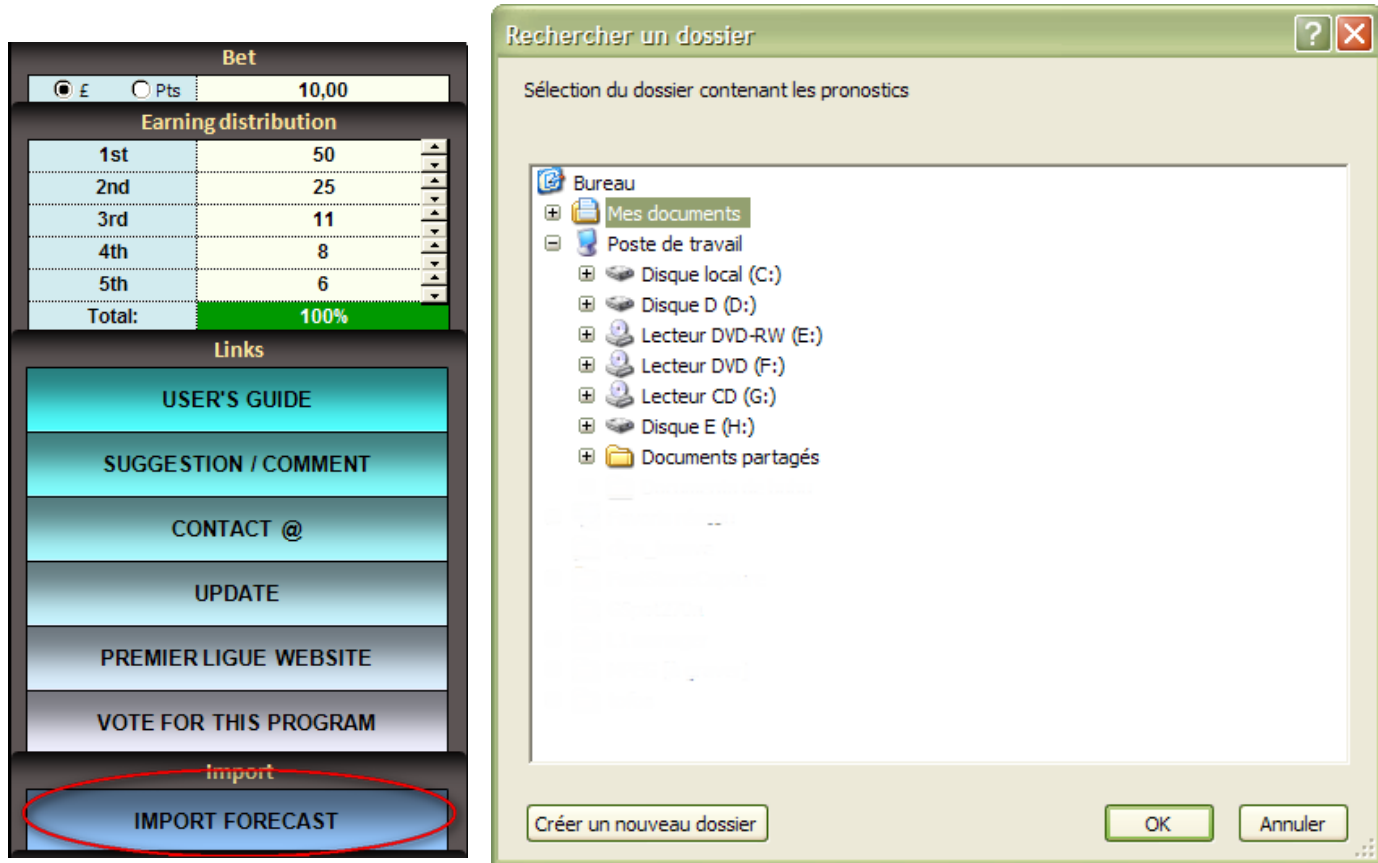


Figure 4

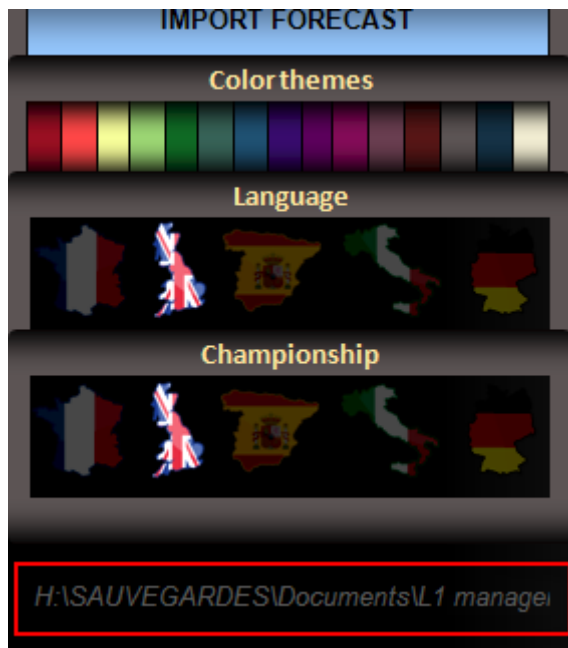
After clicking "ok" the import starts, the result of the import is displayed in the tab "Log" in the file "manager".



Files “pronostic” misinformed (name and / or first name missing, same name / first name in multiple files, ...) will not be imported into the “manager” file.

The import starts the first day not played, then check the tab "Matches" of the “manager” file and check if there are no parasite results. Any started matchday will not be imported.

When you first import the path to the file directory “pronotic” is stored, to reset it, delete the contents of the cell located below the left menu of the tab "options":



The log tab also provides a precise status of imports:

	Upload Table	Matchdays										
log	users	1	2	3	4	5	6	7	8	9	10	11
Add new user: JOUEUR no1	JOUEUR no1											
User :JOUEUR no1, matchday n°: 1 successfully imported	JOUEUR no2											
User :JOUEUR no1, matchday n°: 2 successfully imported	JOUEUR no3											
Add new user: JOUEUR no2	JOUEUR no4											
User :JOUEUR no2, matchday n°: 1 successfully imported												
User :JOUEUR no2, matchday n°: 2 successfully imported												
Add new user: JOUEUR no3												
User :JOUEUR no3, matchday n°: 1 successfully imported												
User :JOUEUR no3, matchday n°: 2 successfully imported												
User :JOUEUR no3, matchday n°: 3 successfully imported												
Add new user: JOUEUR no4												
User :JOUEUR no4, matchday n°: 1 successfully imported												
User :JOUEUR no4, matchday n°: 2 successfully imported												
User :JOUEUR no4, matchday n°: 3 successfully imported												
User :JOUEUR no4, matchday n°: 4 successfully imported												
User :JOUEUR no4, matchday n°: 5 successfully imported												

5 GAME

The file is now ready, match results must be entered in the "manager" file ("Matches" tab).

The calculation of points, the distribution of earnings, the ranking is done automatically.

After importing, the "manager" file can be sent to each participant for points follow-up in real time.