

NeoExec Professional Setup Guide

Version 1.0

Liability Notice

Information in this manual may change without notice and does not represent a commitment on the part of NeoValens.

The software described in this manual is provided by NeoValens under a license agreement. The software may only be used in accordance with the terms of the agreement.

No part of this publication may be reproduced, transmitted, or translated in any form or by any means, electronic, mechanical, manual, optical, or otherwise, without the prior written permission of NeoValens.

NeoValens claims copyright in this program and documentation as an unpublished work, revisions of which were first licensed on the date indicated in the foregoing notice. Claim of copyright does not imply waiver of other rights by NeoValens.

Copyright 2003-2004 © NeoValens S.A.
All rights reserved.

Trademarks

NeoExec is a registered a trademark of NeoValens S.A.
All other trademarks recognized.

NeoValens S.A.
66, Rue de Luxembourg
L-4221 Esch-sur-Alzette
Luxembourg

Email: support@neovalens.com
Web: www.neovalens.com

Published on: January 2004

Contents

NeoExec Professional Setup Guide	1
Contents	2
Introduction.....	3
Installing NeoExec® Administrative Console.....	4
System Requirements.....	4
Installation.....	4
Uninstalling the NeoExec® Administrative Console	12
Installing the NeoExec Professional kernel driver.....	13
System Requirements.....	13
Installation.....	13
After Installation	19
Uninstalling the NeoExec® Professional kernel driver	21

Introduction

This document explains how to install NeoExec Professional on your computer.

NeoExec Professional consists of two components:

1. NeoExec Professional Administrative Console (NAC).
2. NeoExec Professional kernel driver

The NAC is a Windows application that allows you to create and edit NeoExec configuration files. A configuration file contains the list of applications that you wish your users to run with elevated privileges. Such applications are known as *privileged applications*. The configuration file needs to be deployed to each workstation where the NeoExec kernel driver will parse it and apply the policies contained therein.

Setting up NeoExec is straightforward and consist in setting up the NeoExec® Administrative Console on your computer and deploying the NeoExec Professional kernel driver on the computers you want to execute privileged applications.

Installing NeoExec® Administrative Console

This section explains how to install and uninstall the NeoExec® Administrative Console.

The NeoExec® Administrative Console setup uses Microsoft Windows Installer to install the NAC on Windows 2000 and Windows XP. NeoExec Professional does not support Windows 2000 Server and the driver will refuse to start.

Please note that the setup for NeoExec® Administrative Console needs only be installed on the administrators' computer.

System Requirements

Windows 2000 Professional, any service pack

Windows XP Professional, any service pack

Installation

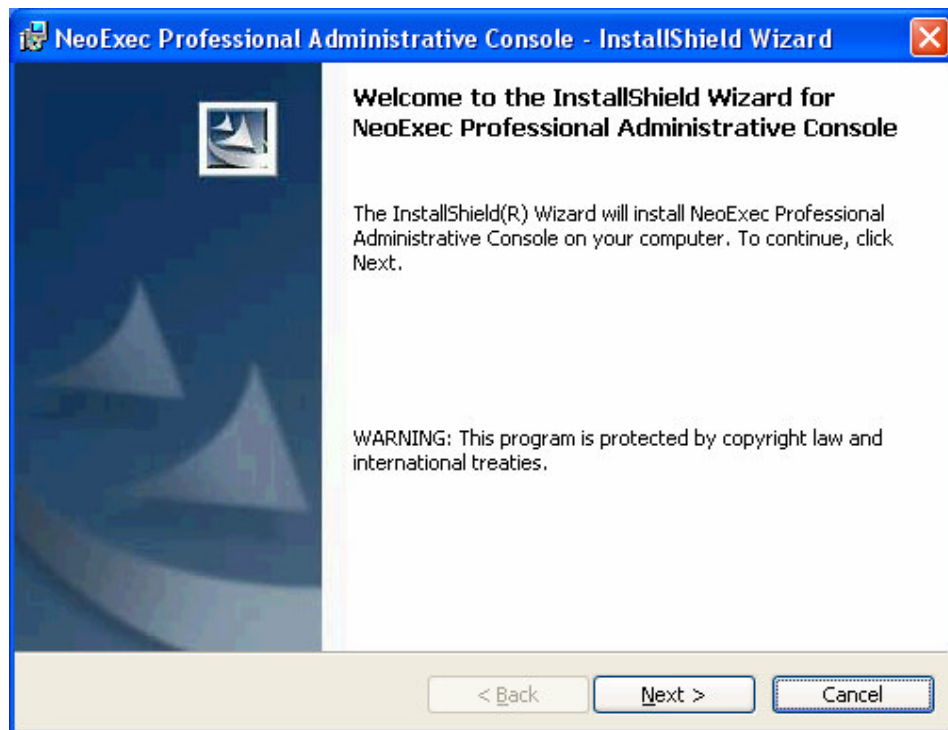
Step 1

Log on with administrative privileges and close all programs running on the computer.

Step 2

To begin the installation navigate to where the NeoExec® Administrative Console setup files are located.

Double click on *NeoExec Professional Administrative Console.msi* to launch the installer. A series of screens will be displayed, beginning with the welcome dialog.



Click "Next" to continue.

Step 3

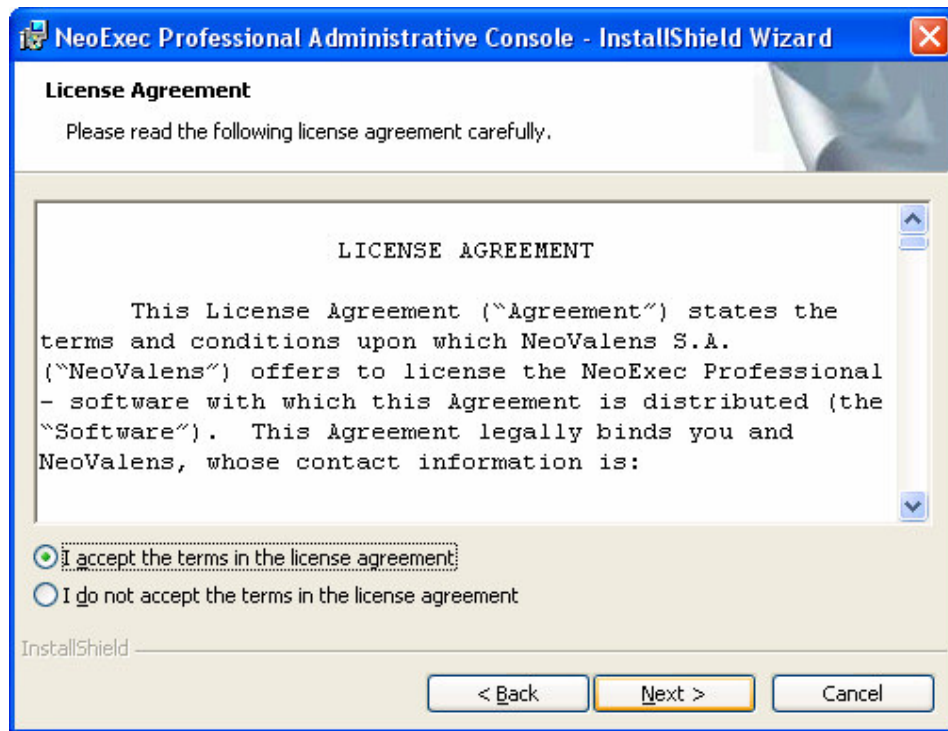
The Release Notes are displayed.



Read the Release Notes thoroughly. They may contain updated information which didn't make it into this guide. Use the scroll bars to read all of the text, and then click on *Next* to continue.

Step 4

The License Agreement is displayed.

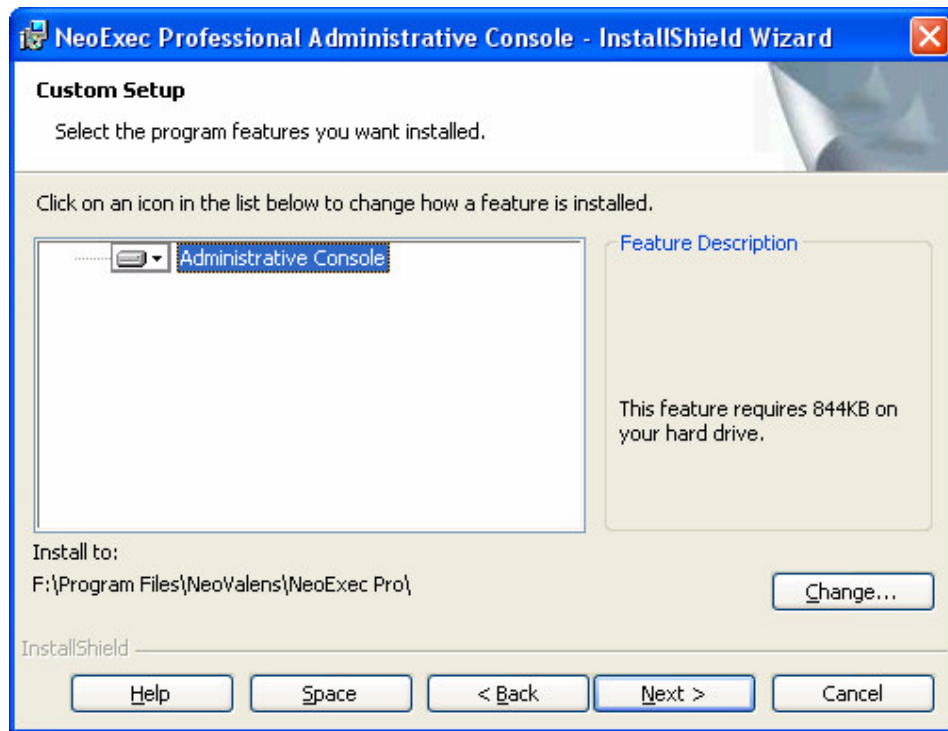


Copyright and international treaties protect the NeoExec® software. Read the license agreement carefully, and providing you agree with its terms, click on "I accept the terms in the license agreement". Click *Next* to continue.

If you do not agree with the terms, click on "I do not accept the terms in the license agreement". Setup will terminate without installing the NeoExec® Administrative Console.

Step 5

The next screen shows the features available.



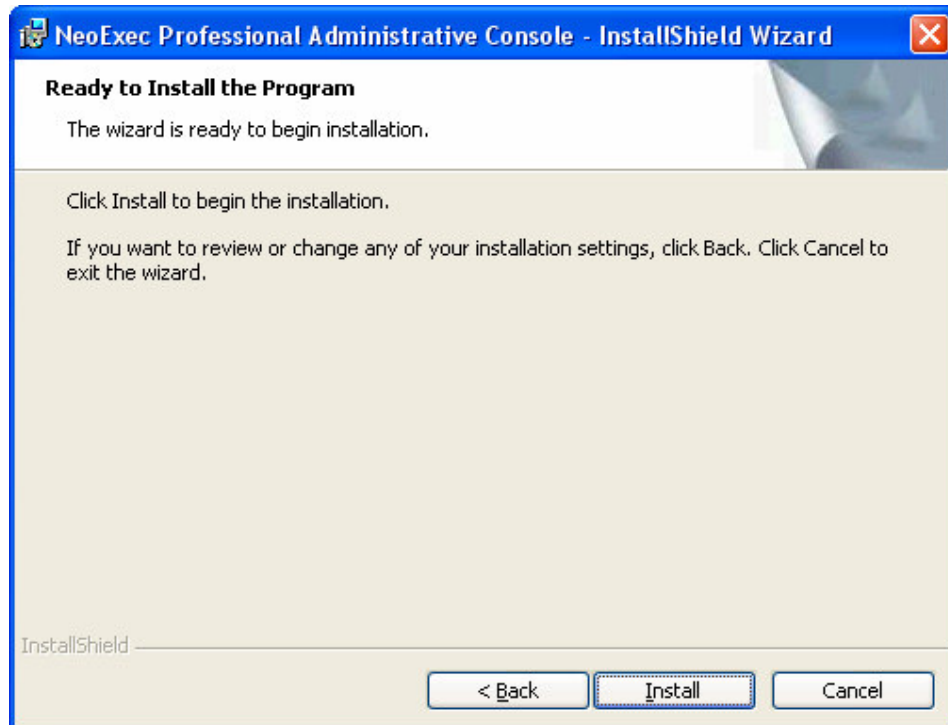
In this step you need to specify where to install the the NeoExec® Administrative Console. The default destination path is *\Program Files\NeoValens\NeoExec Pro*.

To change the location, click on *Change...* to browse the system. Navigate to the desired location and click *OK*, or click *Cancel* to return to the default destination path.

Click *Next* to continue with the installation.

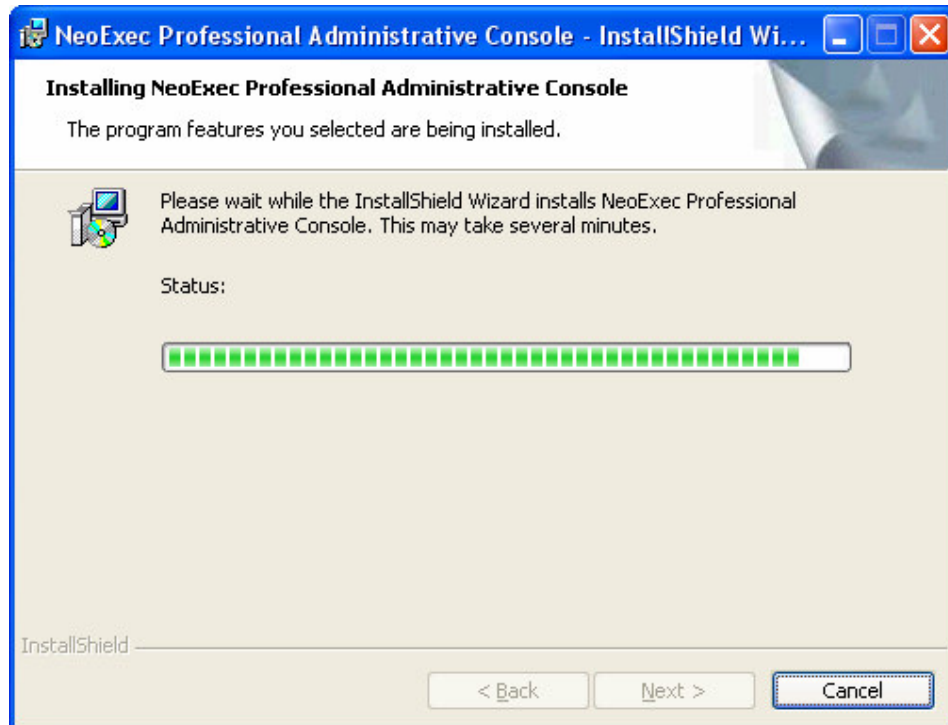
Step 6

You are now ready to begin installation. You can change any of the installation settings by clicking *Back*. Otherwise, click *Install* to begin installation.



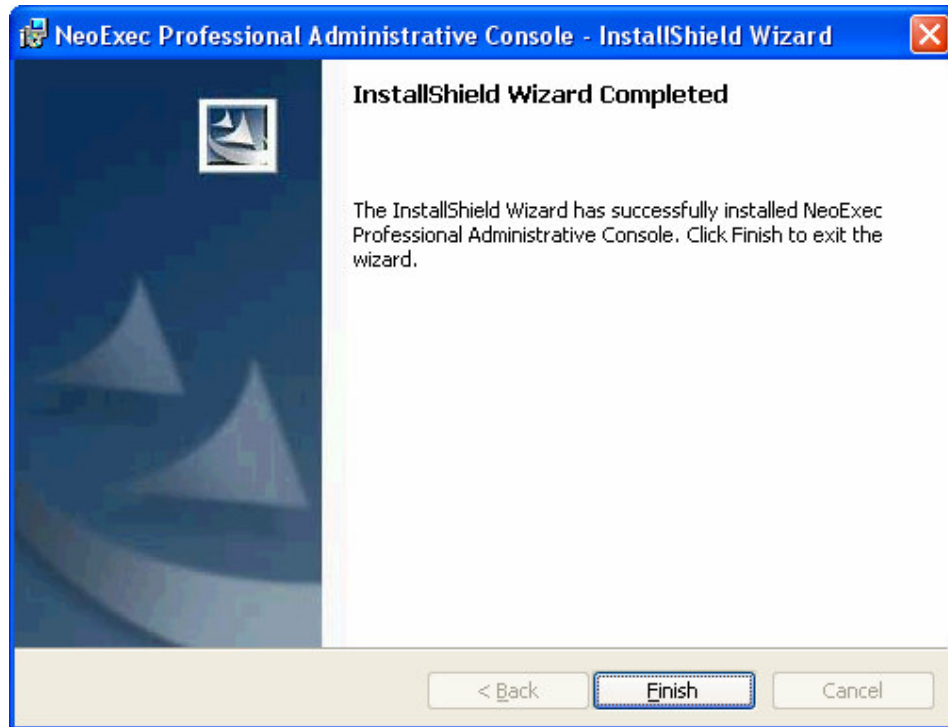
Step 7

The next screen shows the progress of the installation.



Step 8

Finally once the installation is complete the following screen is displayed.



Click *Finish* to exit the installation program.

There is no need to reboot.

Shortcuts

Once the installation is successfully completed, you should be able to access the NeoExec® Administrative Console from the *Start -> Programs -> NeoExec Professional -> Administrative Console* shortcut.

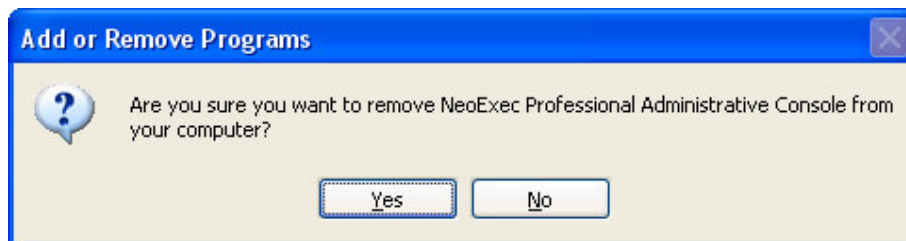
Uninstalling the NeoExec® Administrative Console

At any time after installing NeoExec® Administrative Console you can uninstall it from your computer. To uninstall NeoExec you must log on with administrative privileges.

To uninstall NeoExec® Administrative Console go to *Start -> Settings -> Control Panel* and select *Add or Remove Programs*.

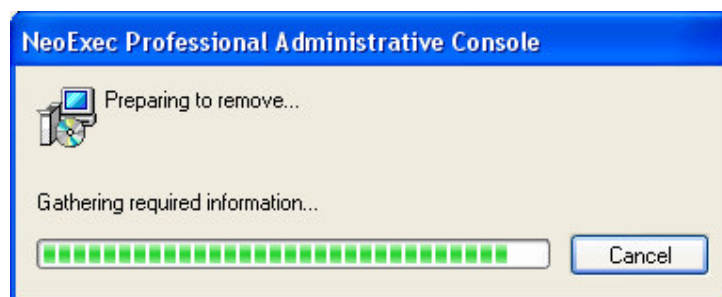
Select *NeoExec® Administrative Console* and click *Change/Remove*.

A series of prompts will be displayed to confirm that you want to remove the application from your computer.



Click on *Yes* to uninstall.

A progress bar will be displayed as the program is uninstalled.



Once this has completed the NeoExec® Administrative Console has been removed from your computer.

There is no need to reboot.

Installing the NeoExec Professional kernel driver

This section explains how to install and uninstall the NeoExec® Professional kernel driver.

The NeoExec® software uses Microsoft Windows Installer to install NeoExec® Professional on Windows 2000 professional and Windows XP Professional.

System Requirements

Windows 2000 Professional, any service pack

Windows XP Professional, any service pack

Installation

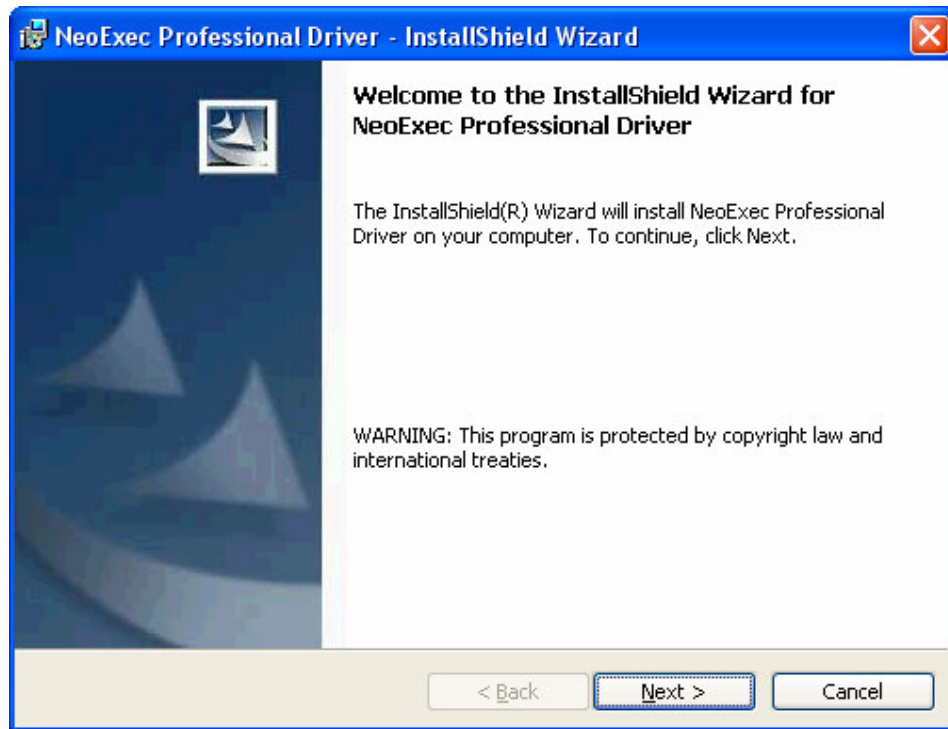
Step 1

Log on with administrative privileges and close all programs running on the computer.

Step 2

To begin the installation navigate to where the NeoExec® Professional setup files are located.

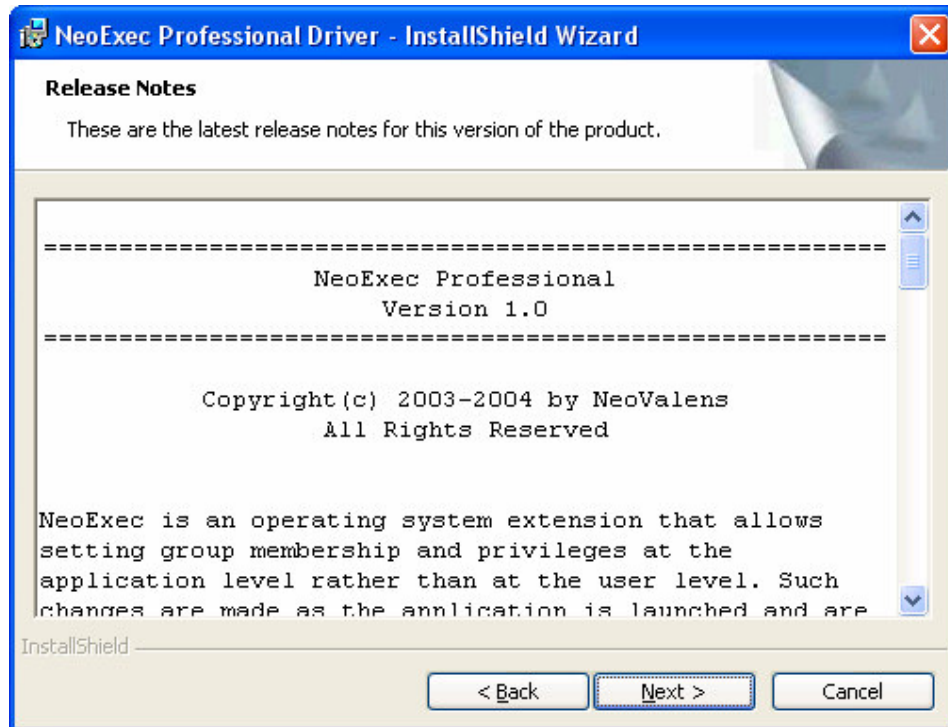
Double click on *NeoExec Professional kernel driver.msi* to launch the installer. A series of screens will be displayed, beginning with the welcome dialog.



Click *Next* to continue.

Step 3

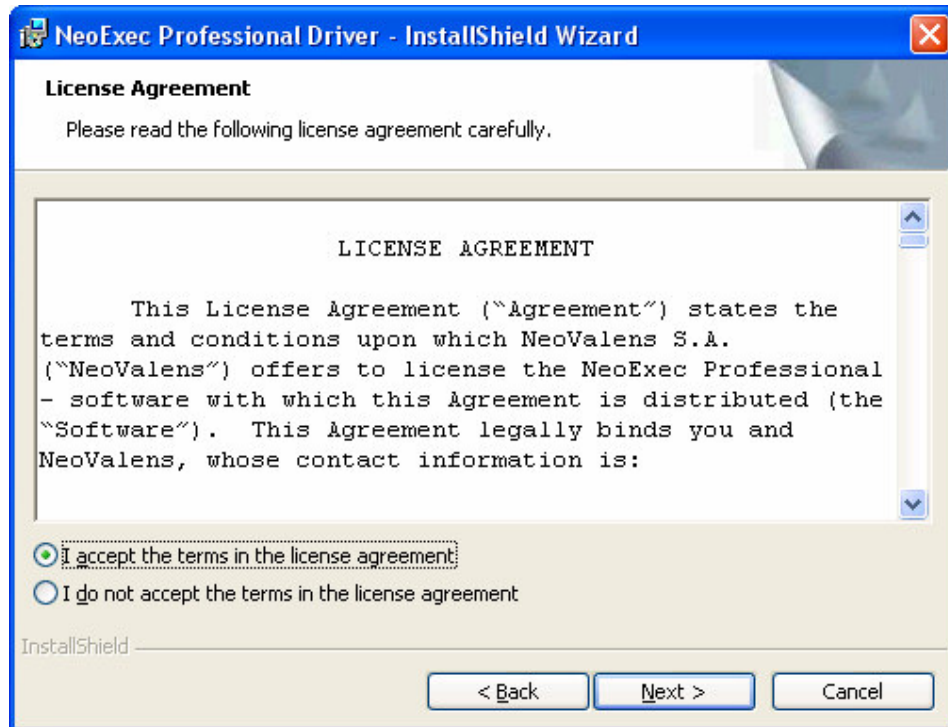
The Release Notes are displayed.



Read the Release Notes thoroughly. They may contain updated information which didn't make it into this guide. Use the scroll bars to read all of the text, and then click on *Next* to continue.

Step 4

The License Agreement is displayed.

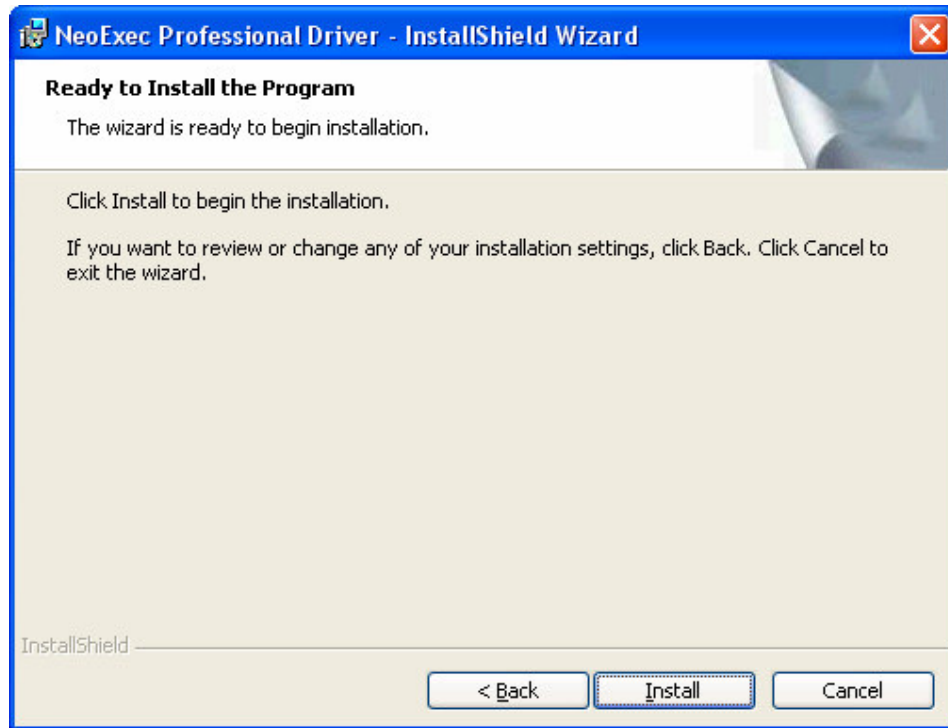


Copyright and international treaties protect the NeoExec® software. Read the license agreement carefully, and providing you agree with its terms, click on "I accept the terms in the license agreement". Click *Next* to continue.

If you do not agree with the terms, click on "I do not accept the terms in the license agreement". Setup will terminate without installing NeoExec® Professional.

Step 5

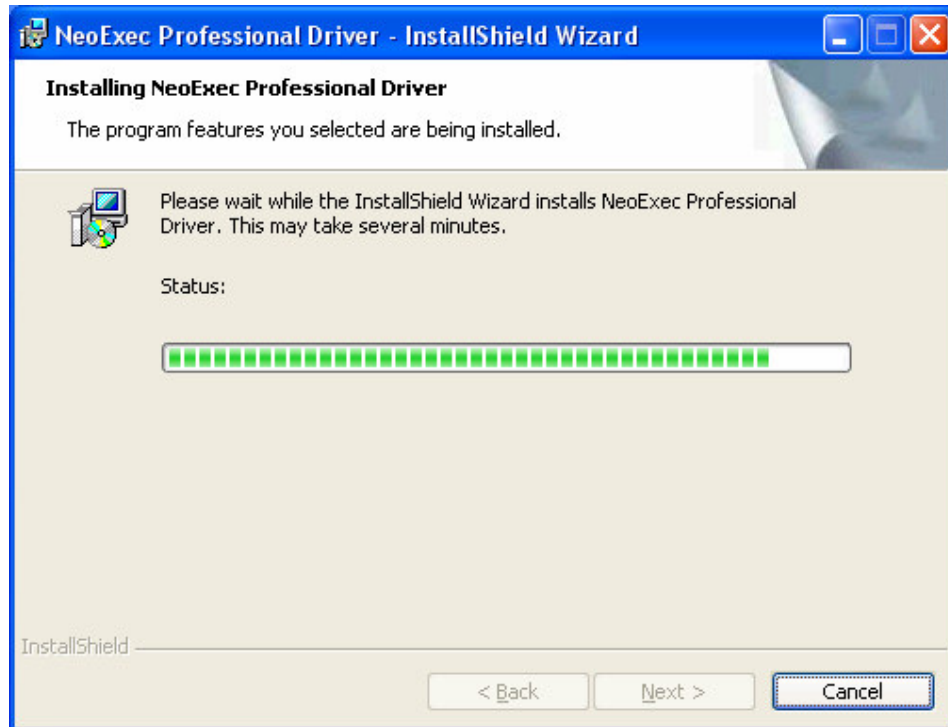
You are now ready to begin installation. You can change any of the installation settings by clicking *Back*. Otherwise, click *Install* to begin installation.



The setup will copy the driver file *neoexec.sys* to the *\SystemRoot\System32\Drivers* directory. It will also create a directory called *Neo* under *\SystemRoot\System32* which will hold the NeoExec® configuration and license files.

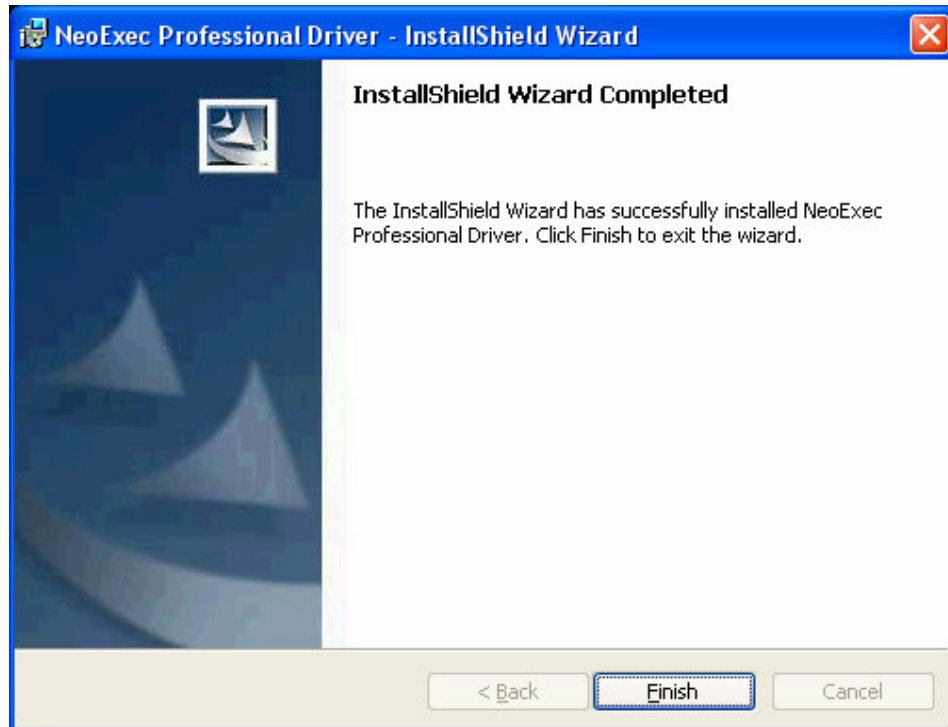
Step 6

The next screen shows the progress of the installation.



Step 7

Once the installation is complete the following screen is displayed.



Click *Finish* to exit the installation program.

There is no need to reboot.

After Installation

Once the setup has completed you need to create a configuration file in order to use the NeoExec® Professional software. This is done by means of the NeoExec® Administrative Console.

The resulting file *neoexec.cfg* must be deployed to each target computer. The *neoexec.cfg* file must be copied to the *Neo* directory, where NeoExec will automatically pick it up. NeoExec® monitors the directory for changes every 30 seconds.

For more information on creating configuration files refer to the [NeoExec Professional Administration Guide](#).

Trial mode

Without the license file, NeoExec® Professional will start in Trial mode. NeoExec® Professional can be used for evaluation purposes for up to thirty days, after which the product will be disabled unless a valid license file is supplied.

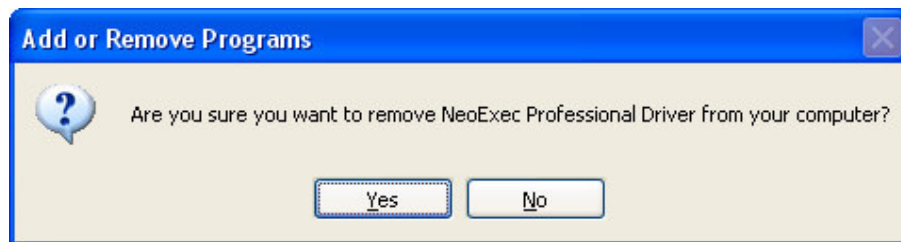
Uninstalling the NeoExec® Professional kernel driver

At any time after installing the NeoExec® Professional kernel driver you can uninstall it from your computer. To uninstall NeoExec you must log on with administrative privileges.

To uninstall NeoExec® Professional go to *Start -> Settings -> Control Panel* and select *Add or Remove Programs*.

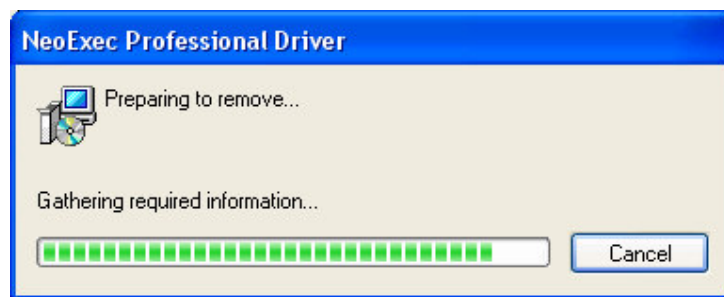
Select *NeoExec® Professional 1.0 kernel driver* and click *Change/Remove*.

A series of prompts will be displayed to confirm that you want to remove the application from your computer.



Click on *Yes* to uninstall.

A progress bar will be displayed as the program is uninstalled.



Once this has completed, NeoExec® Professional kernel driver has been removed from your computer.

The final screen informs you that you need to reboot your system in order for the uninstall to take effect. You can chose to do this now, or at a later date.

