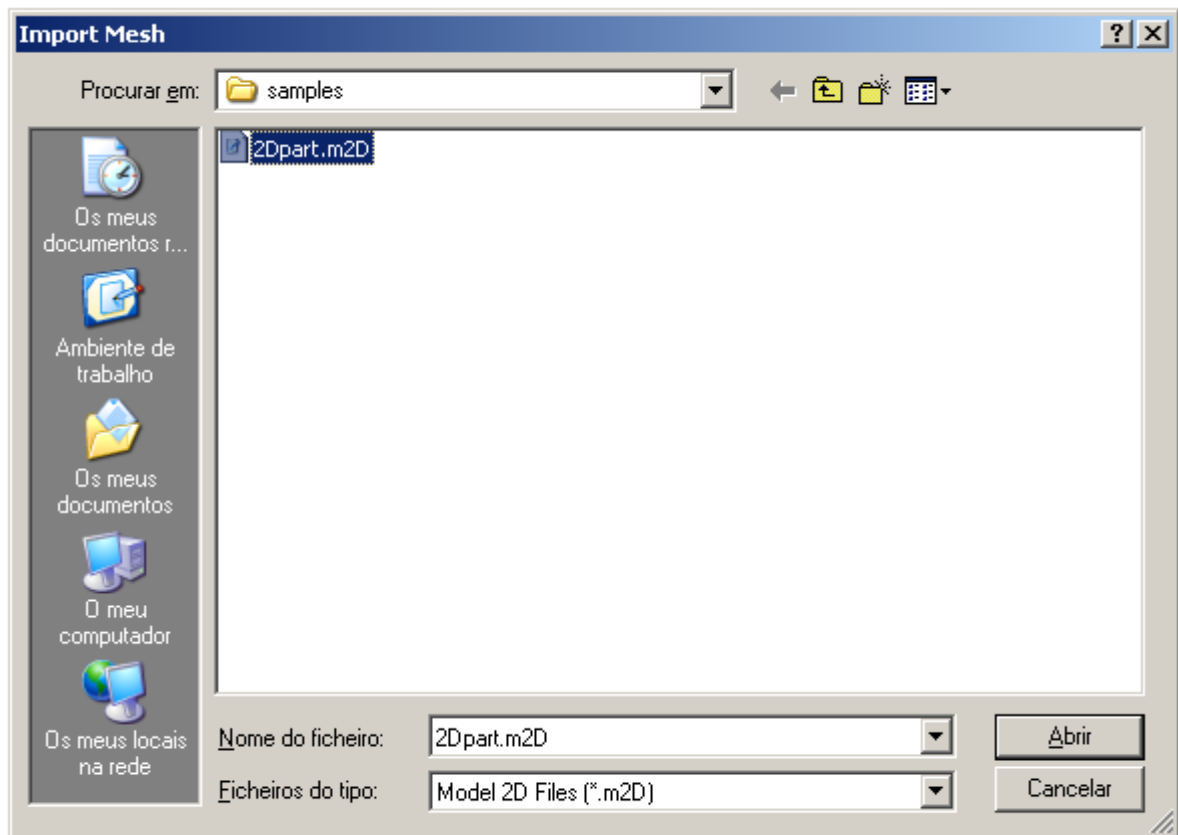
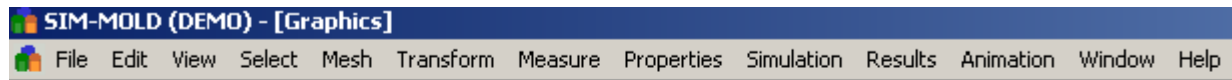


SimMold 2012

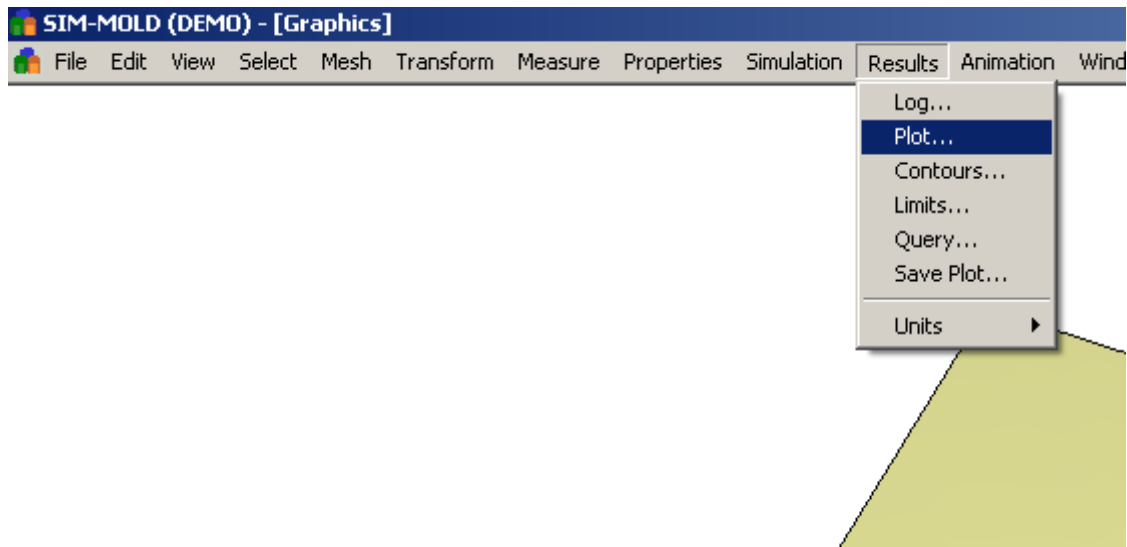
Quick Start Guide

14/05/2012

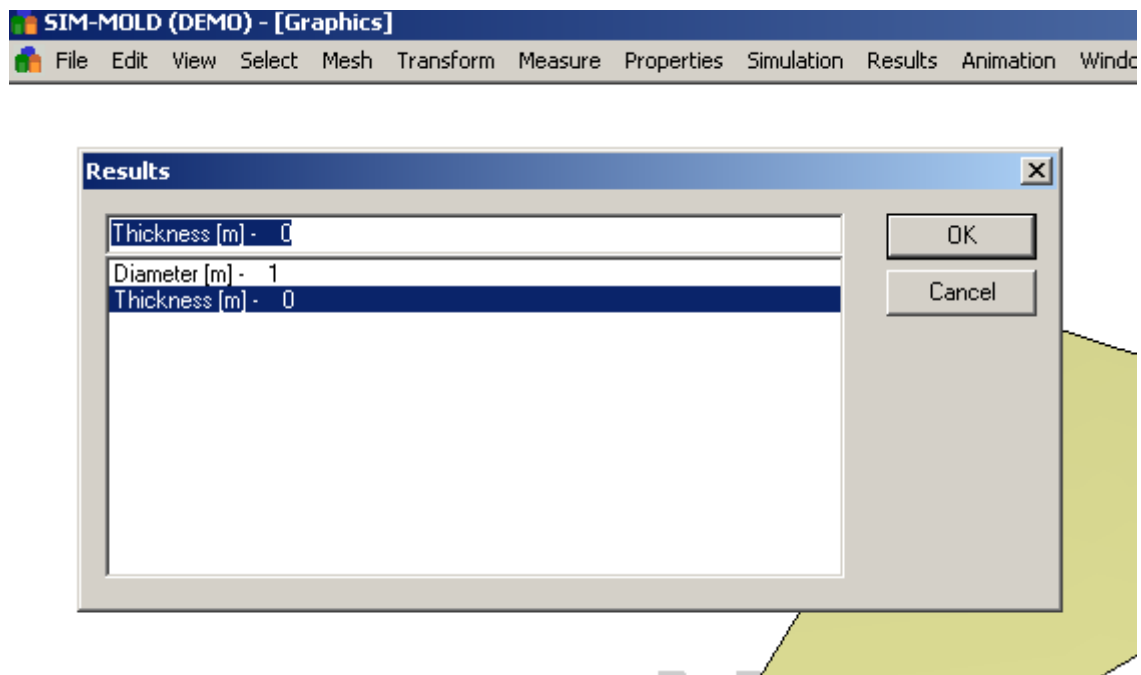
1. Copy the samples directory (normally located in C:\Program Files\SimMold to a directory with write permissions.
2. Import the 2Dpart.m2d mesh file using File->Import Mesh...



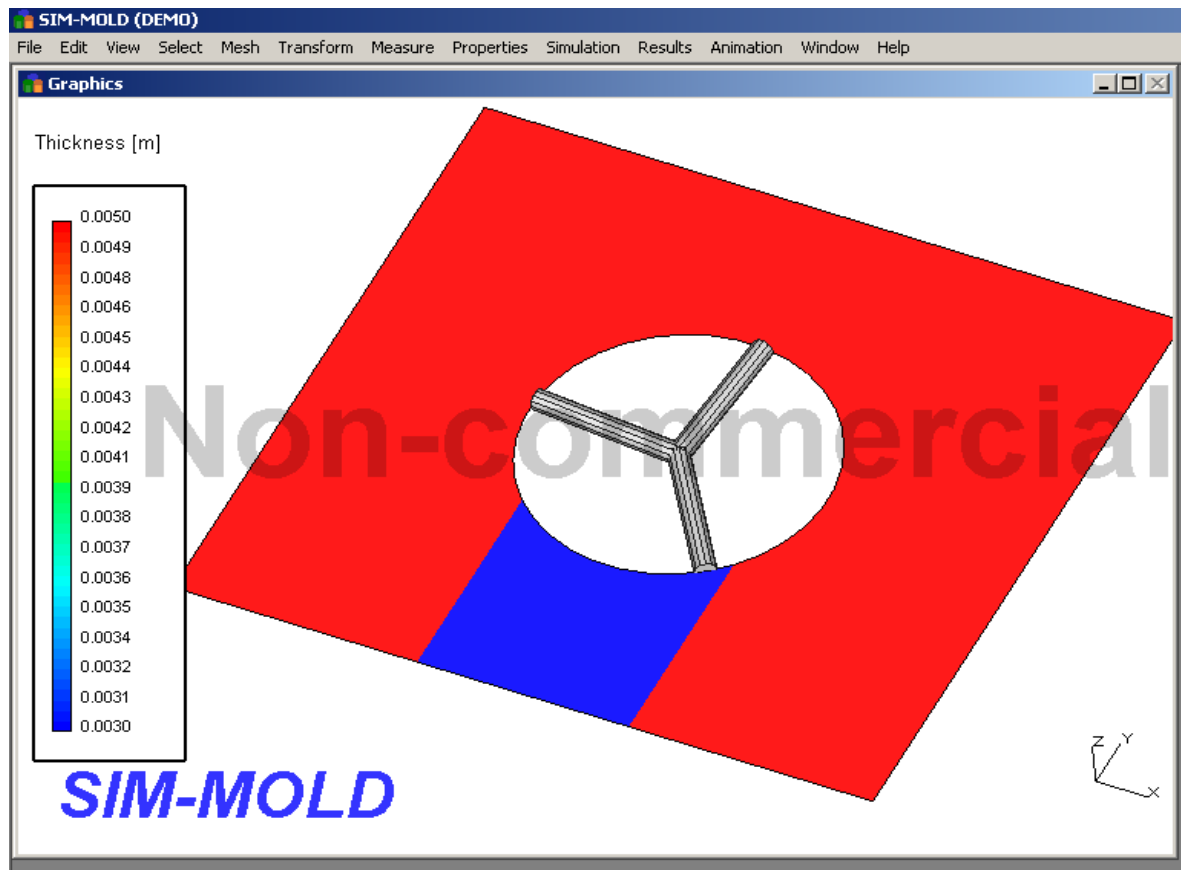
3. Since this is a midplane model, each element has an assigned thickness. In order to plot thickness goto Results->Plot...



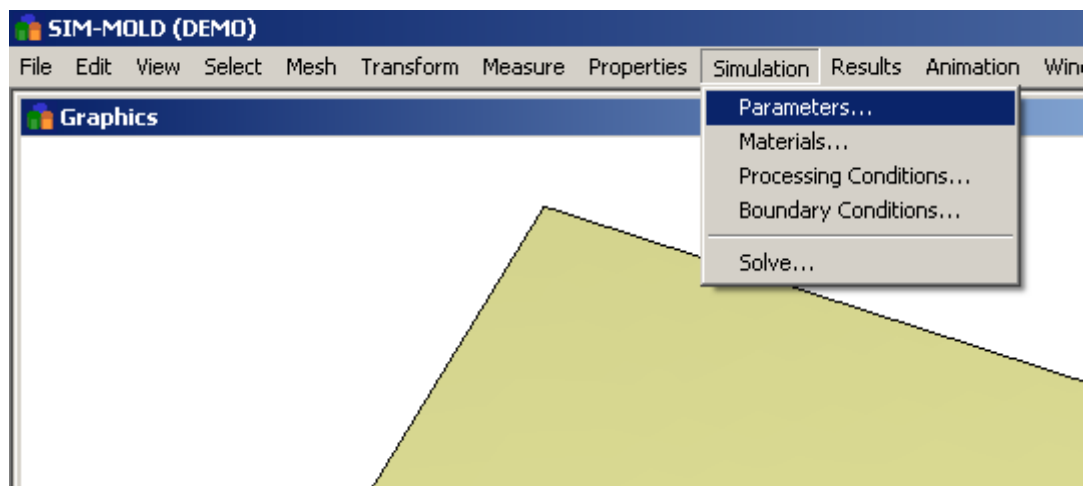
4. Choose thickness from the dialog window.



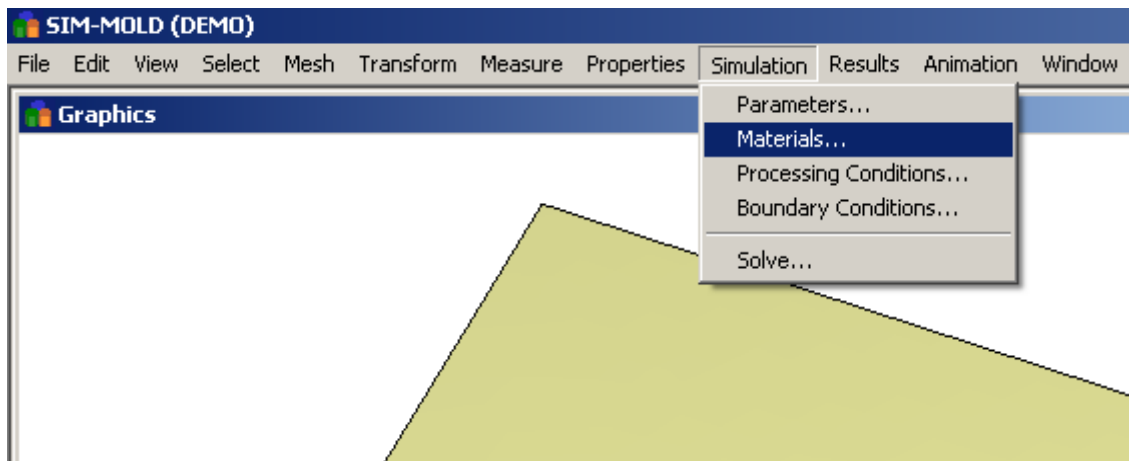
5. Thickness will be displayed as color plot.



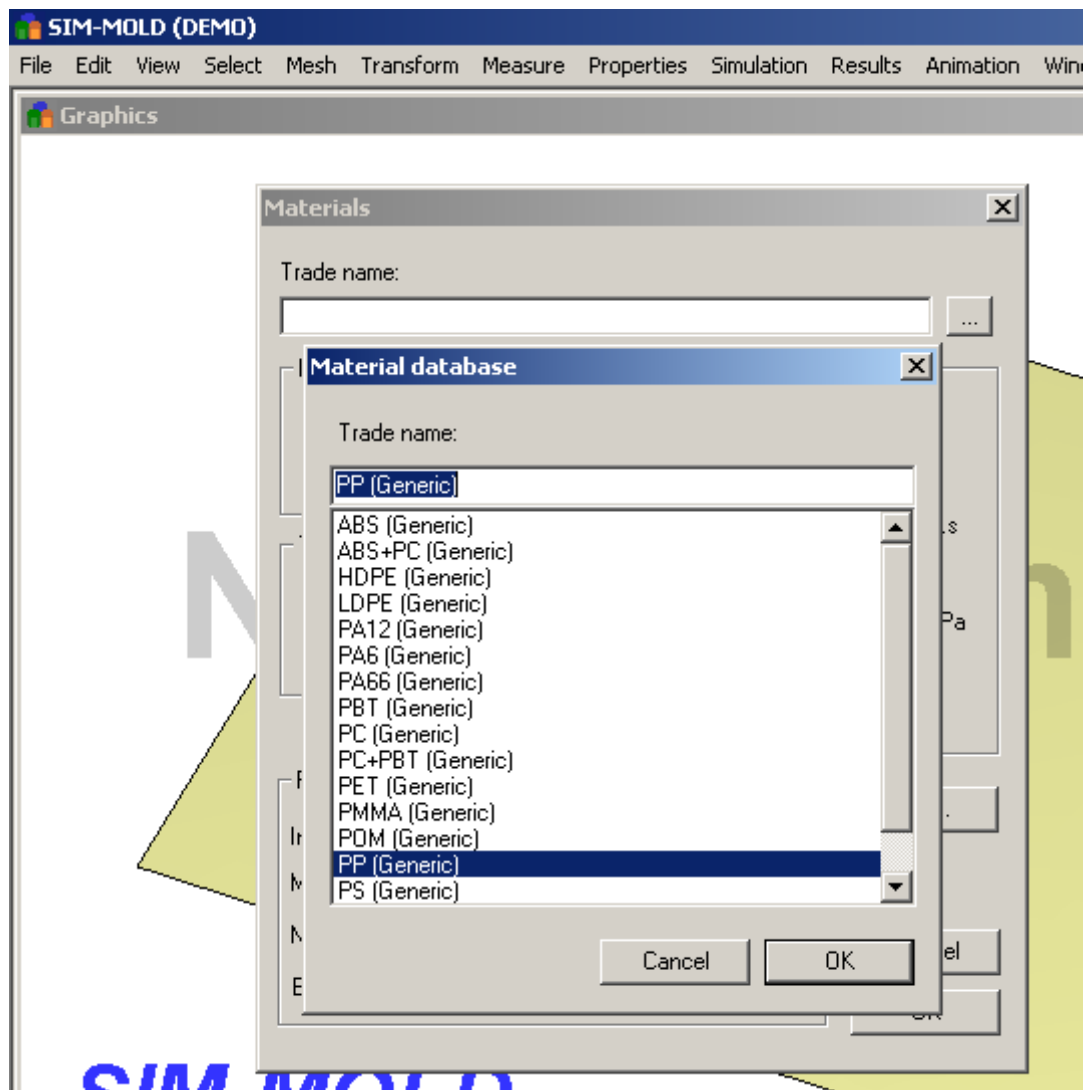
6. Goto Simulation->Parameters... and click OK to accept default values.



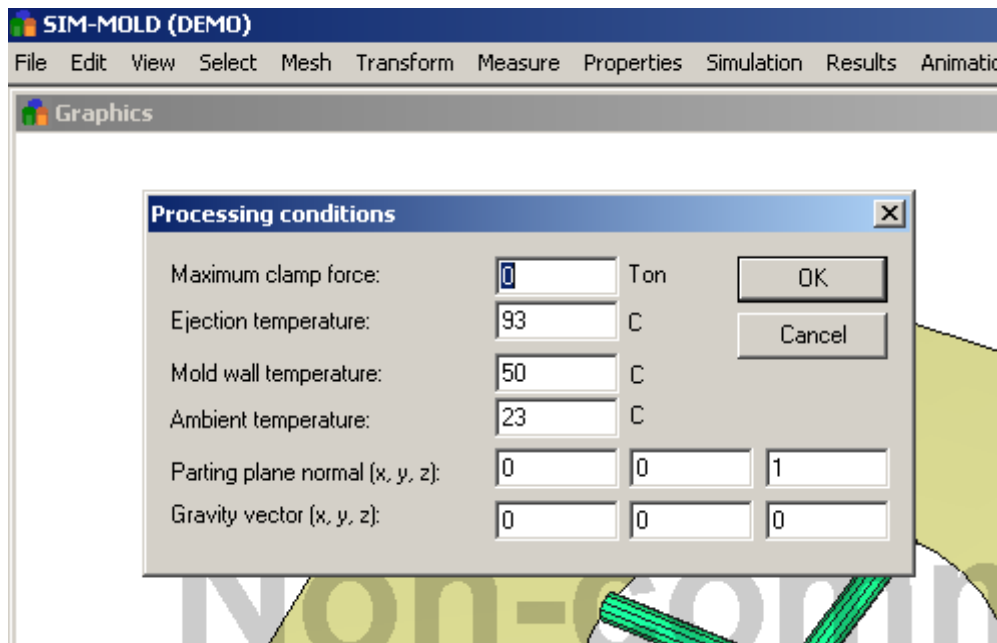
7. Goto Simulation->Materials...



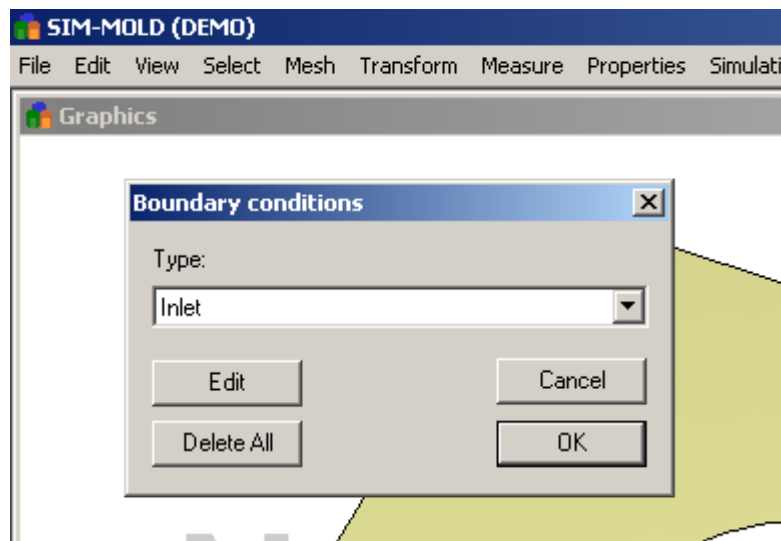
8. In the dialog click on “...” button after trade name. In the material database dialog select PP (Generic). Select OK on both dialog boxes.



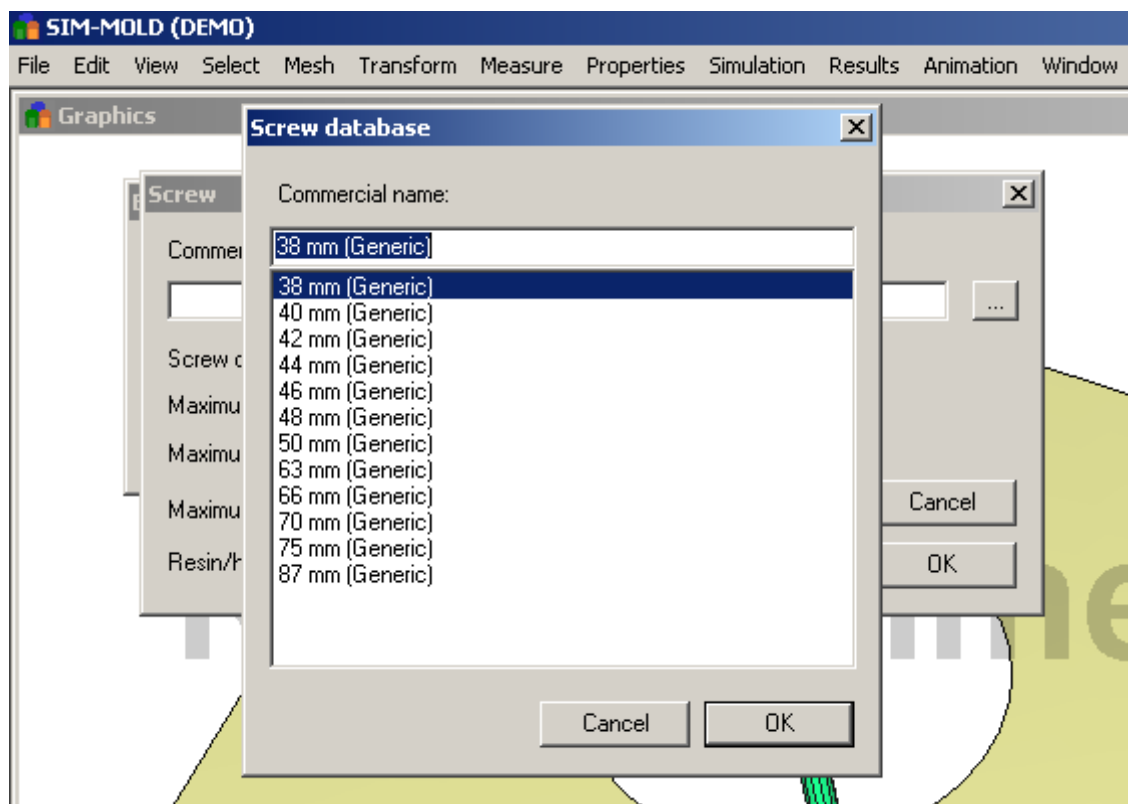
9. Goto Simulations->Processing Conditions... and click OK to accept default values.



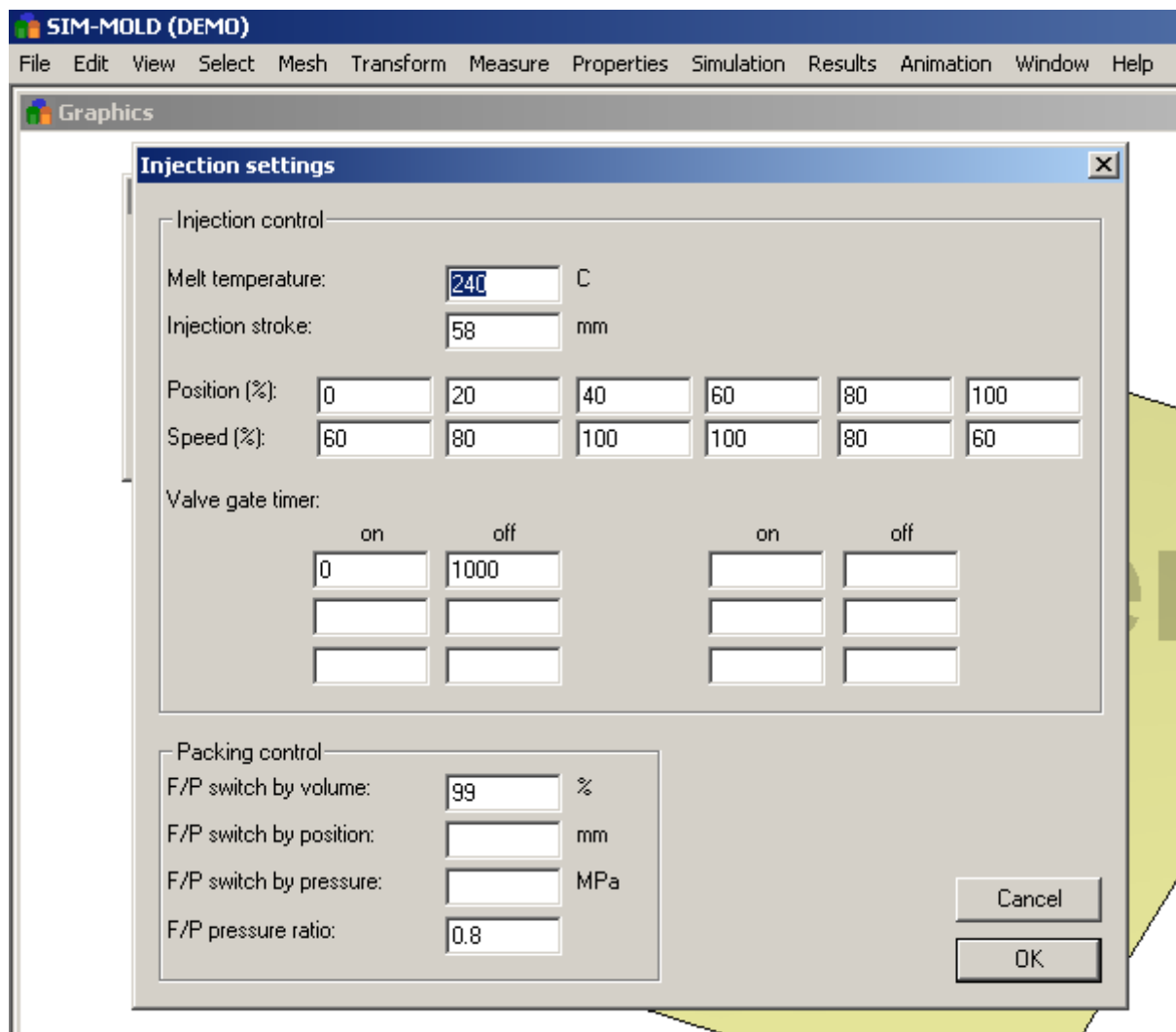
10. Click on Simulations->Boundary Conditions... and select Inlet.



11. In the screw dialog click on “...” button and choose a 38 mm screw. Click OK two times to advance.



12. In the Injection Settings dialog click OK to accept default values.



13. Click on one node that you want to set the inlet or injection point (left mouse button click). To accept that node click on the middle button of your mouse or press Enter in the Input window.

14. Click Simulation->Solve... and select Flow to run the simulation. If the program is registered, the simulation will run and output the results to a f2d file. The educational version will work for meshes with a maximum of 5000 nodes. If it is not registered it will do nothing. In order to register goto Help->Register... and send us the following information using the contact form:

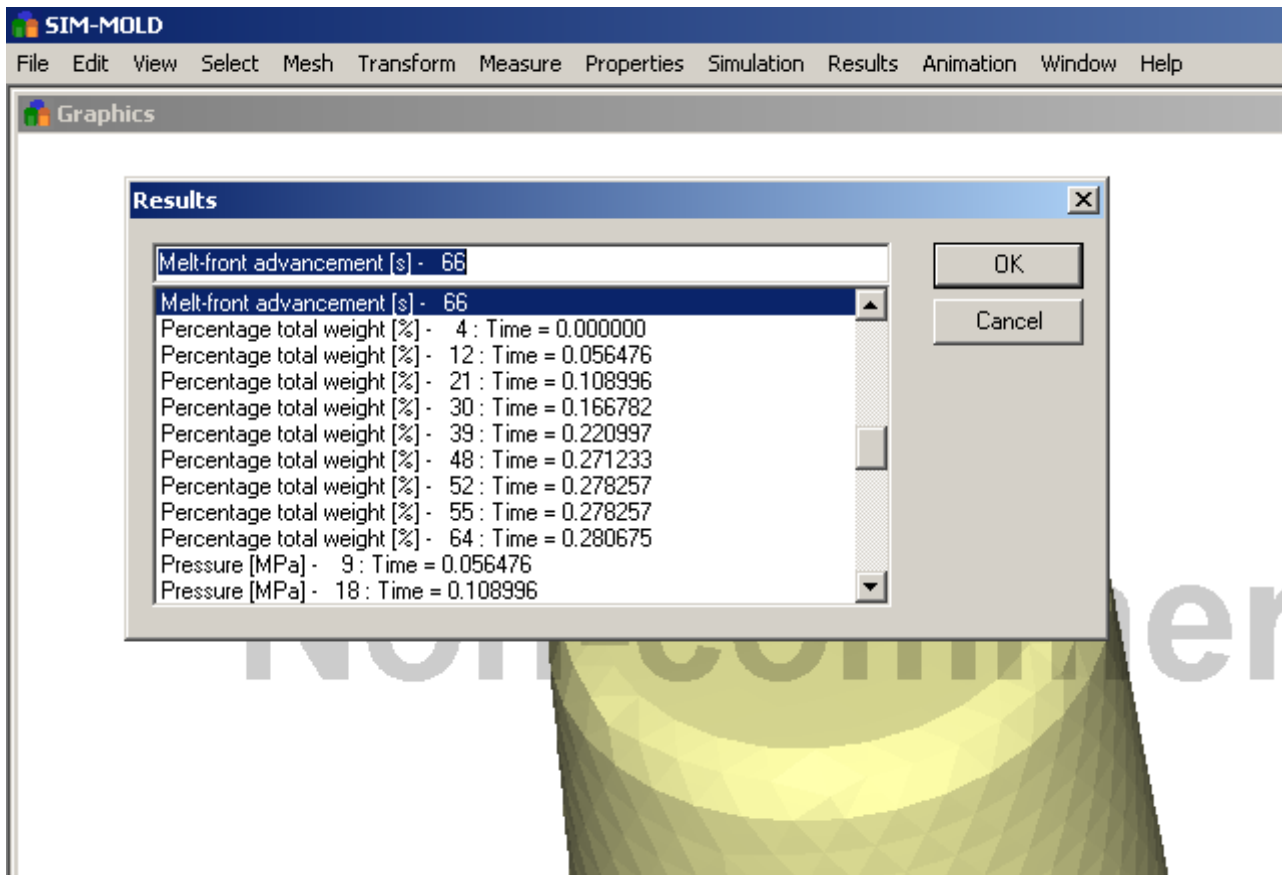
- Product name,
- Version,
- System ID.

Note: We will send you ASAP a license file which you can then copy to the program

directory. Usually to "C:\Program Files\SimMold." You will have to restart the application to use the application in the correct mode. When the application is in "demo mode", the word "DEMO" appears in the title bar.

15. Click on File->Read Results... to load results.

16. Click Results->Plot... and select the result you want to view.



17. The results are displayed using a color plot.

